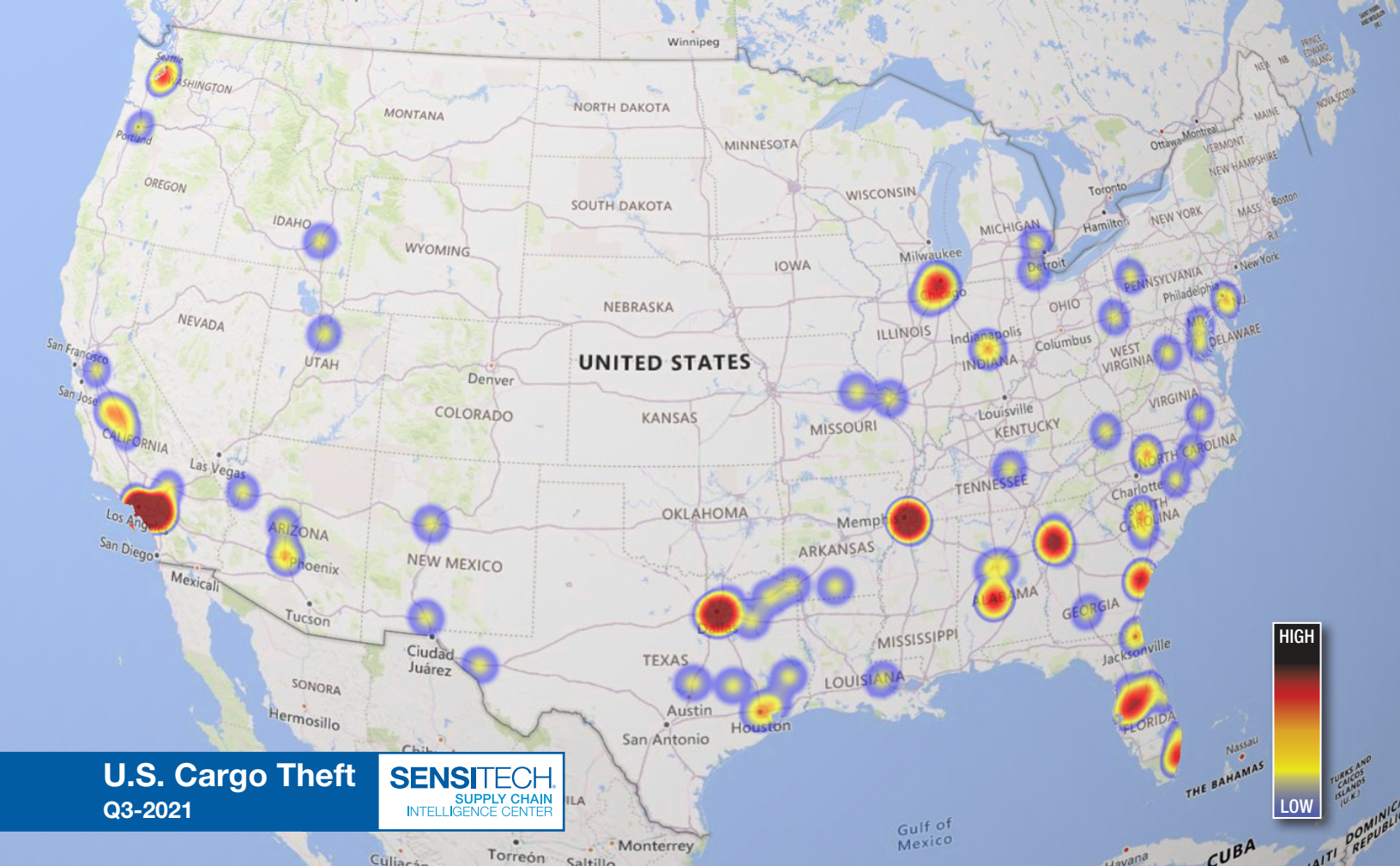




Cargo Theft Intelligence Report

United States Edition

Q3-2021 Report



Introduction

The Sensitech® Supply Chain Intelligence Center (SCIC) actively tracks and records cargo theft activity around the globe, categorizing stolen loads under twelve different product types, and tracking by date, location, *Modus Operandi* (M.O.), value, and specific product. This report summarizes the United States theft data collected in Q3-2021, and analyzes trends derived from database content, law enforcement information, and industry personnel. It also draws on observations by personnel in the field.

It is inherent that the reader understands that any cargo theft report is an indirect representation of the overall cargo theft footprint; it is not a direct reflection. Sensitech Security Services records only those cargo thefts reported by reliable sources, such as transportation security councils, insurance companies, and law enforcement organizations. While this does not result in a 100% capture of incidents, it provides a sufficient cross-section of cargo thefts and allows the SCIC to identify trends and deliver in-depth, accurate analysis of the scope of cargo theft in the United States. Additionally, the SCIC only records incidents involving the theft of cargo, not standalone conveyances such as trailers, containers or bobtail tractors.

United States: Q3-2021 Cargo Theft Trends

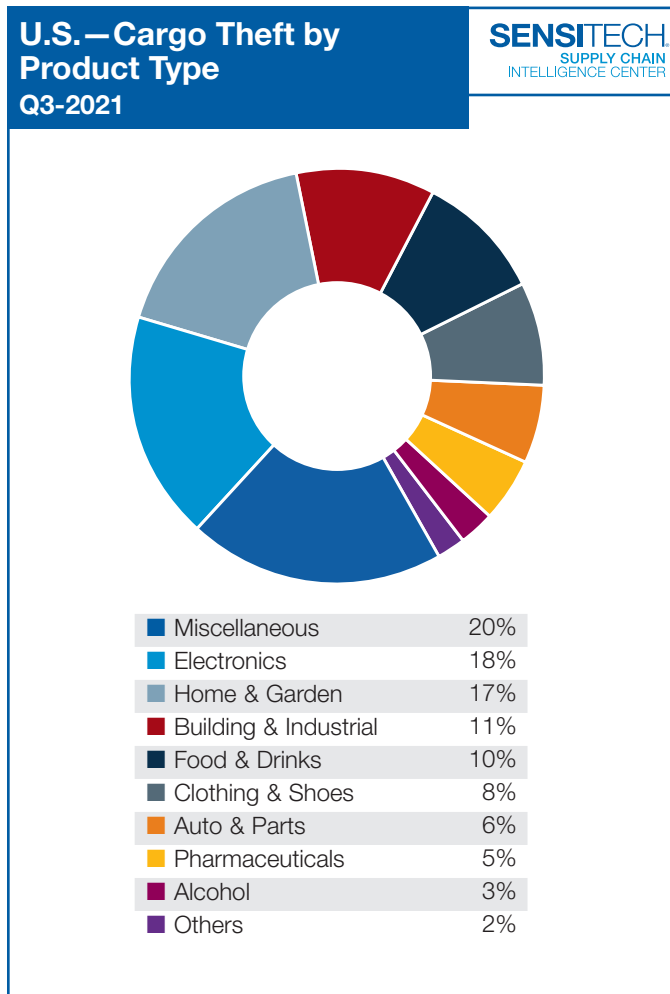
In Q3-2021, the Sensitech Supply Chain Intelligence Center (SCIC) recorded a total of 177 cargo thefts in the United States. During this time, 49 of these incidents occurred in July, 66 occurred in August, and 62 occurred in September. The average loss value per incident during this time was \$337,077. Through a comparison with the previous quarter (Q2-2021), this represents a 7% decrease in volume and an 8% decrease in value. Similarly, when comparing these figures to the same quarter last year (Q3-2020), this represents a 16% decrease in volume and an increase in average value of 100%.

Delays in incident reporting typically cause measurable increases in theft volumes in the weeks and months following publication of SCIC quarterly reports. As such, totals for the most recent quarter are expected to rise above those recorded thus far. It is SCIC practice to use updated theft numbers for past quarters when comparing them to current three-month totals.

Cargo Theft by Product Type

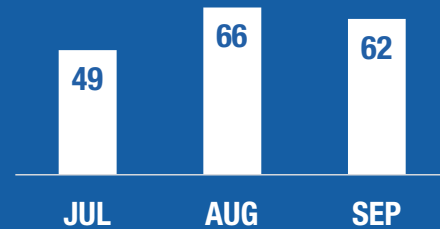
In Q3-2021, *Miscellaneous* products were targeted most frequently, representing 20% of thefts. Within this product category, *Mixed Loads* represented 76% of thefts.

Electronics thefts took the number two spot with 18% and were led by *Televisions & Displays* (41%) and *Software, Components & Peripherals* (19%). *Home & Garden*, which represented 17% of thefts, was led by *Appliances* (41%). Totaled together, the top three product types accounted for 55% of total thefts.

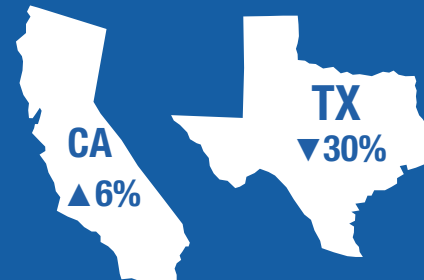


UNITED STATES CARGO THEFT TRENDS

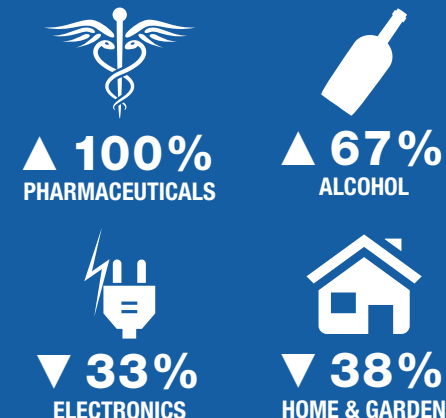
TOTAL Q3-2021 177



Q3-2021 vs Q2-2021



SHIFTS IN PRODUCT TYPE



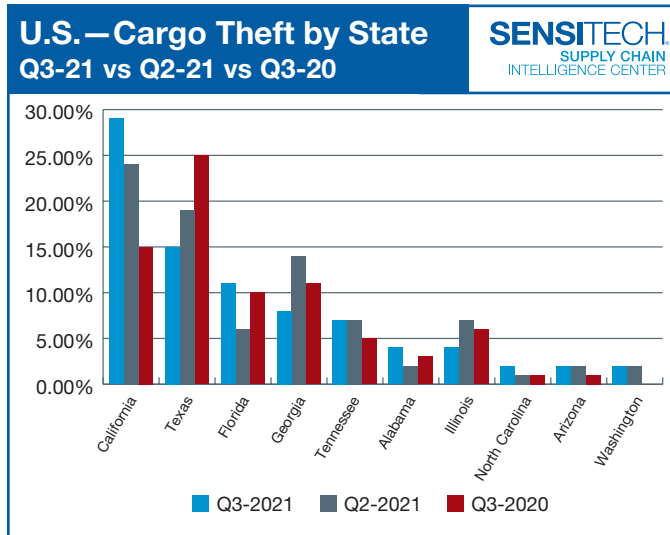
Cargo Theft by State

In Q3-2021, **California** remained at the top of the list of cargo theft by state with 29% of the total, registering a 6% increase versus Q2-2021. Thefts in the state were primarily comprised of *Electronics* (41%), followed by *Home & Garden*, *Clothing & Shoes*, and *Miscellaneous*, each of which represented 12% of thefts.

Texas accounted for 15% of total thefts this quarter, making it the state with the second highest concentration of incidents in the U.S. When compared to the previous period, Texas experienced a 30% decrease in cargo thefts. *Home & Garden* and *Miscellaneous* tied for first position as the most frequently stolen product types with 31% each, followed by *Building & Industrial* (15%).

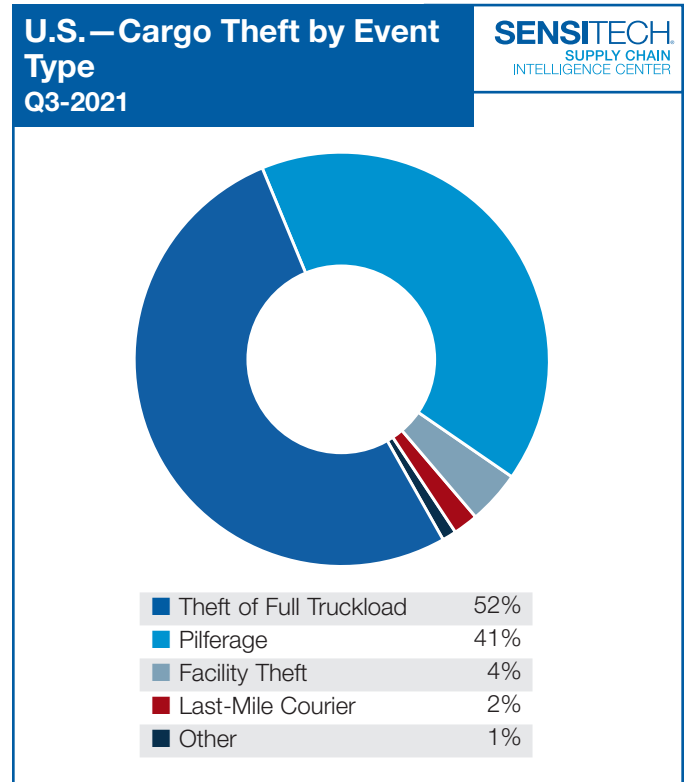
Florida (11%) showed an increase of 73% versus Q2-2021, moving up from fifth to third place this quarter. Most thefts consisted of *Food & Drinks* loads (21%). In **Georgia**, (8% of total), *Building & Industrial*, *Food & Drinks*, and *Home & Garden* represented a combined 60% of thefts in the state. **Tennessee**, which concentrated 7% of cargo thefts, decreased by 14% from the previous quarter (Q2-2021), with one in four thefts in the state falling under the *Home & Garden* category.

The most prevalent location for large-scale cargo thefts continued to be in *Unsecured Parking*, identified in 50% of incidents in which a location type was declared. *Thefts from Truck Stops/Fuel Stations* recorded 27% of the total while *Secured Parking* and *Warehouse/DC* logged 9% each.



Cargo Theft by Event Type

Theft of Full Truckload (52%) was once again the most prevalent method of theft in Q3-2021, despite a 5% decrease versus Q2-2021. *Pilferage* experienced a similar decrease of 6%, accounting for 41% of total thefts. *Theft of Full Truckload* events saw a drop of 55% in the average loss value within the category when compared to Q2-2021 and 8% from Q3-2020. In contrast, the average value of *Pilferage* thefts increased significantly by 218% and 1618% from Q2-2021 and Q3-2020 respectively, largely due to one incident involving a load of *Jewelry & Watches* valued at over USD \$10 million.



Cargo Theft by Product Type and Value

In Q3-2021 two product types experienced an increase in theft rate over both comparative quarters, Q2-2021 and Q3-2020 (highlighted in red). *Alcohol* thefts increased by 67% over Q2-2021 and 25% over Q3-2020. Within this product type, 50% of thefts took place in Florida and Georgia (25% each). The category was topped by *Spirits* (42%), and *Beer* (33%).

Product Type	Q3-2021	Pct. Change Q2-2021	Pct. Change Q3-2020
Alcohol	3%	67%	25%
Auto & Parts	6%	10%	0%
Building & Industrial	11%	0%	58%
Clothing & Shoes	8%	18%	18%
Electronics	19%	-33%	23%
Food & Drinks	10%	-11%	-41%
Home & Garden	17%	-28%	-42%
Miscellaneous	20%	-3%	13%
Other	2%	0%	-82%
Pharmaceuticals	5%	100%	-20%

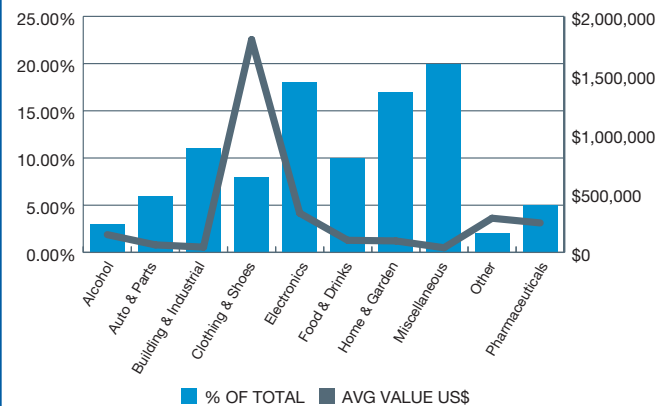
Product Type	Avg. Value
Alcohol	\$150,540
Auto & Parts	\$63,764
Building & Industrial	\$44,683
Clothing & Shoes	\$1,803,315
Electronics	\$332,765
Food & Drinks	\$102,640
Home & Garden	\$97,351
Miscellaneous	\$39,528
Other	\$289,630
Pharmaceuticals	\$250,000
Total	\$337,077

The average loss value across all incidents was \$337,077, which is 8% lower than the Q2-2021 average and 100% higher than Q3-2020. *Clothing & Shoes* recorded the highest average value at \$1,803,315. This is a 702% increase in average value versus Q2-2021 and a 281% increase over Q3-2020.

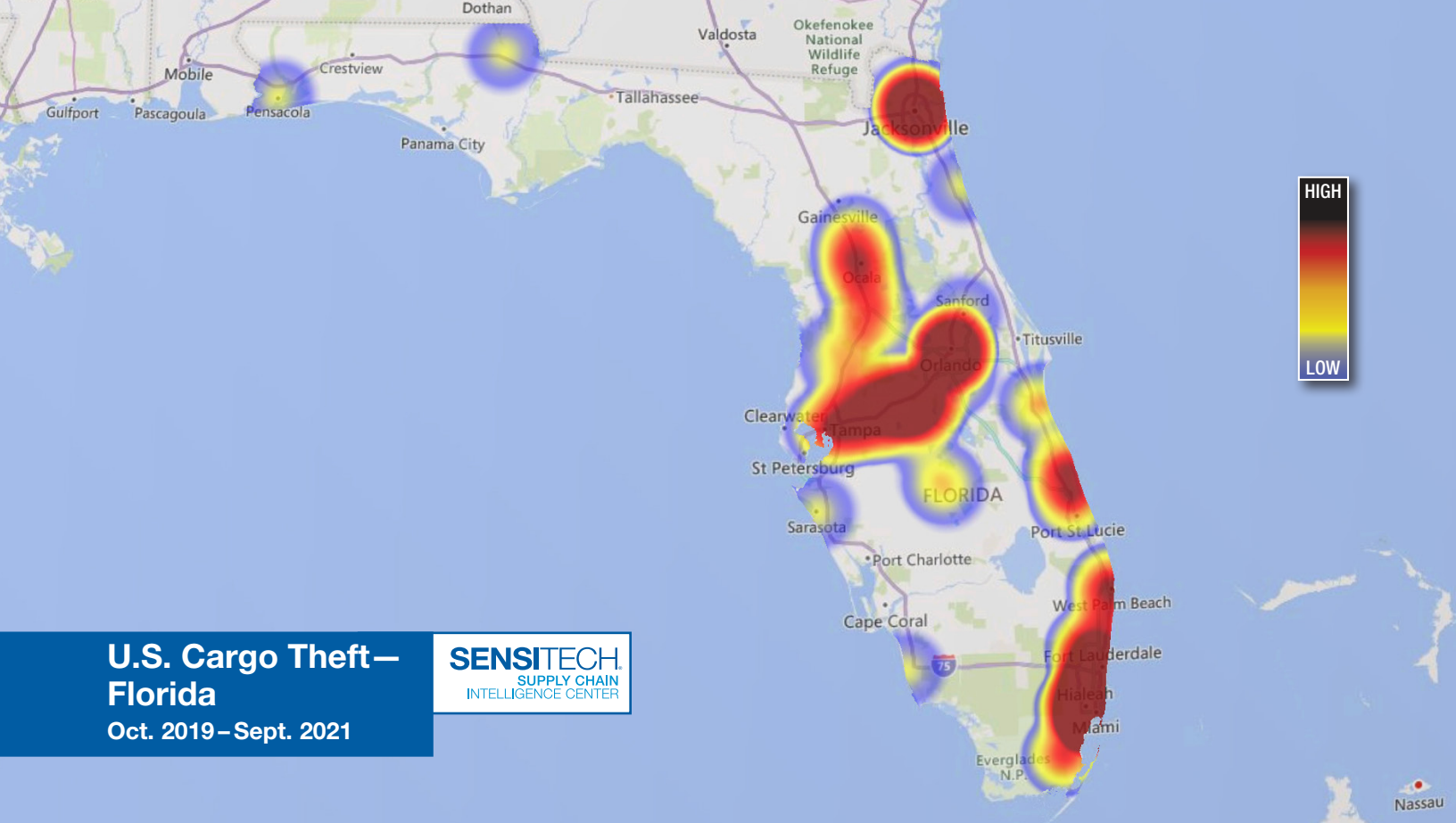
Besides *Clothing & Shoes*, *Alcohol* and *Building & Industrial* were the only other two product categories to record increased average values over both comparative quarters while *Auto & Parts* and *Miscellaneous* recorded decreases in average value over both comparative quarters.

U.S. — Cargo Theft by Product Type and Value Q2-2021

SENSITECH
SUPPLY CHAIN
INTELLIGENCE CENTER



Three product types recorded lower theft rates in Q3-2021 than in both comparative quarters (highlighted in yellow). Among these product types was *Home & Garden*, which was the third most reportedly stolen category despite registering a 28% decrease versus Q2-2021 and a 42% decrease versus Q3-2020. *Food & Drinks* thefts decreased 11% and 41% in comparison to Q2-2021 and Q3-2020, respectively, ranking fifth overall.



Quarterly Spotlight: Florida

To better serve the security-minded logistics community, the Sensitech Supply Chain Intelligence Center (SCIC) is spotlighting one product category, theft type, geographical area or trend in each business quarter report.

This quarter's spotlight focuses on cargo theft in the state of Florida. Unless otherwise specified, all data and analysis in this section will be from U.S. thefts recorded between October 2019 and September 2021 (24 months). During this time, Florida concentrated 8% of total thefts with an average loss value of \$164,159, a value 7% lower than that recorded across all states.

When broken down by theft type, 83% of Florida thefts were *Theft of Full Truckload* events, which occurred at a rate 66% higher than across all states. These incidents primarily took place from *Unsecured Parking* locations (62%).

Florida—Cargo Theft by Product Type October 2019 – September 2021

SENSITECH
SUPPLY CHAIN
INTELLIGENCE CENTER



Food & Drinks	20%
Miscellaneous	18%
Home & Garden	12%
Electronics	8%
Auto & Parts	8%
Pharmaceuticals	7%
Clothing & Shoes	7%
Personal Care	6%
Alcohol	5%
Building & Industrial	4%
Metals	3%
Tobacco	2%

Florida thefts were led by *Food & Drinks* (20%), *Miscellaneous* (18%), *Home & Garden* (12%), *Electronics* (8%) and *Auto & Parts* (8%), representing a combined 66% of thefts within the state.

Cargo theft incidence in Florida has averaged out to 20 incidents per quarter over the 24-month period. Theft volumes reached a low of 11 incidents in Q2-2021, decreasing 54% versus the previous quarter. Q3-2021 registered a 73% increase over Q2-2021, falling just below the quarterly average. Average loss values peaked in Q3-2020 at \$327,107, making it one of only two quarters to have exceeded the 24-month average of \$164,159, the second being Q4-2020.

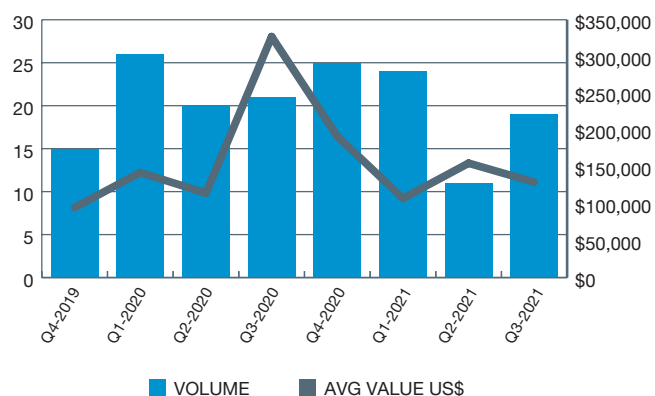
Conclusion

As cargo thieves continually adapt to the evolving logistical security landscape, new threats will take shape in the form of new theft methods and new targeted products in new regions. High value or low security will not be the only determining factors in theft risk to cargo as thieves will adjust to the increased risk and modify their efforts accordingly.

For more information on Sensitech or our logistics security services please contact: sensitech.securelpm@carrier.com

Florida—Cargo Thefts by Quarter and Value Q4-2019 to Q3-2021

SENSITECH
SUPPLY CHAIN
INTELLIGENCE CENTER





About Sensitech Security Services Data



Unless otherwise noted, the theft statistics in this assessment are derived from data collected by the Sensitech Supply Chain Intelligence Center (SCIC) and other information collected from reliable sources. The SCIC captures cargo theft and supply chain risk data from numerous sources around the globe. These include, but are not limited to, the databases of Sensitech's Security Services, its customers, law enforcement agencies, industry organizations, insurance industry sources, and news reports. This report offers an analysis of the data collected during Q3-2021, providing insight into cargo theft and supply chain risk across the globe.

Please note that cargo theft goes largely unreported; as such, total theft figures for a particular country or region are likely higher than stated. In addition, global cargo theft circumstances and risks change, sometimes frequently and quickly, and in ways that may make the facts and opinions expressed here no longer valid. Therefore, the extent to which organizations rely on the information provided in this assessment should be solely at their discretion.

About Sensitech Security Services

Sensitech Inc. is a leading provider of **global logistics security services**, offering tracking and monitoring solutions that provide organizations with cargo security, **transparency** and **supply chain integrity** from origin to destination. Using real-time visibility technology and layered solutions, organizations can actively monitor their cargo anywhere in the global supply chain to mitigate the risks associated with theft, spoilage, counterfeiting and more. With operations across the globe, Sensitech is uniquely positioned to deliver services regionally across diverse supply chains.

Sensitech is focused on delivering supply chain visibility solutions that track, monitor and protect products for global leaders in the food, life sciences, consumer goods, and industrial markets. Our solutions are focused in three key areas: **cold chain**, **supply chain security**, and **logistics performance management**. Cold chain solutions address temperature-sensitive, complex supply chains focused on delivering the highest quality possible, while our supply chain security solutions help to mitigate risks associated with theft, diversion and chain of custody. Sensitech's logistics performance solutions deliver origin-to-destination, real-time transparency to any in-transit journey. Sensitech is an ISO 9001:2015 company, headquartered in Beverly, Mass., with over 35 sales, service and distribution locations around the world. Sensitech is a **Carrier** company, a leading provider of heating, air conditioning and refrigeration systems, building controls and automation, and fire and security systems leading to safer, smarter, sustainable and high-performance buildings.

More information about Sensitech is available at www.sensitech.com

To register to receive alerts, bulletins and reports, please visit the [Sensitech Supply Chain Intelligence Center](#)

The information contained in this document is the property of Sensitech Inc. This information may not be sold, licensed, or used for business development in any capacity without the prior written consent of Sensitech Inc. Sensitech Inc. encourages recipients to use this information for cargo theft prevention activities and to share this information in its entirety with colleagues who may also benefit in a theft prevention capacity. Where possible, we have elected to maintain news articles and briefs in their native grammatical format. ©2021 Carrier.

sensitech.com



29 Nov 2021

Sensitech Inc. Global Headquarters • 800 Cummings Center, Suite 258X • Beverly, MA 01915-6197
+1-800-843-8367 • +1-978-927-7033 • Fax 978-921-2112 • sensitech.securelpm@carrier.com



A Carrier Company